

**Junio**



**INDICADORES**

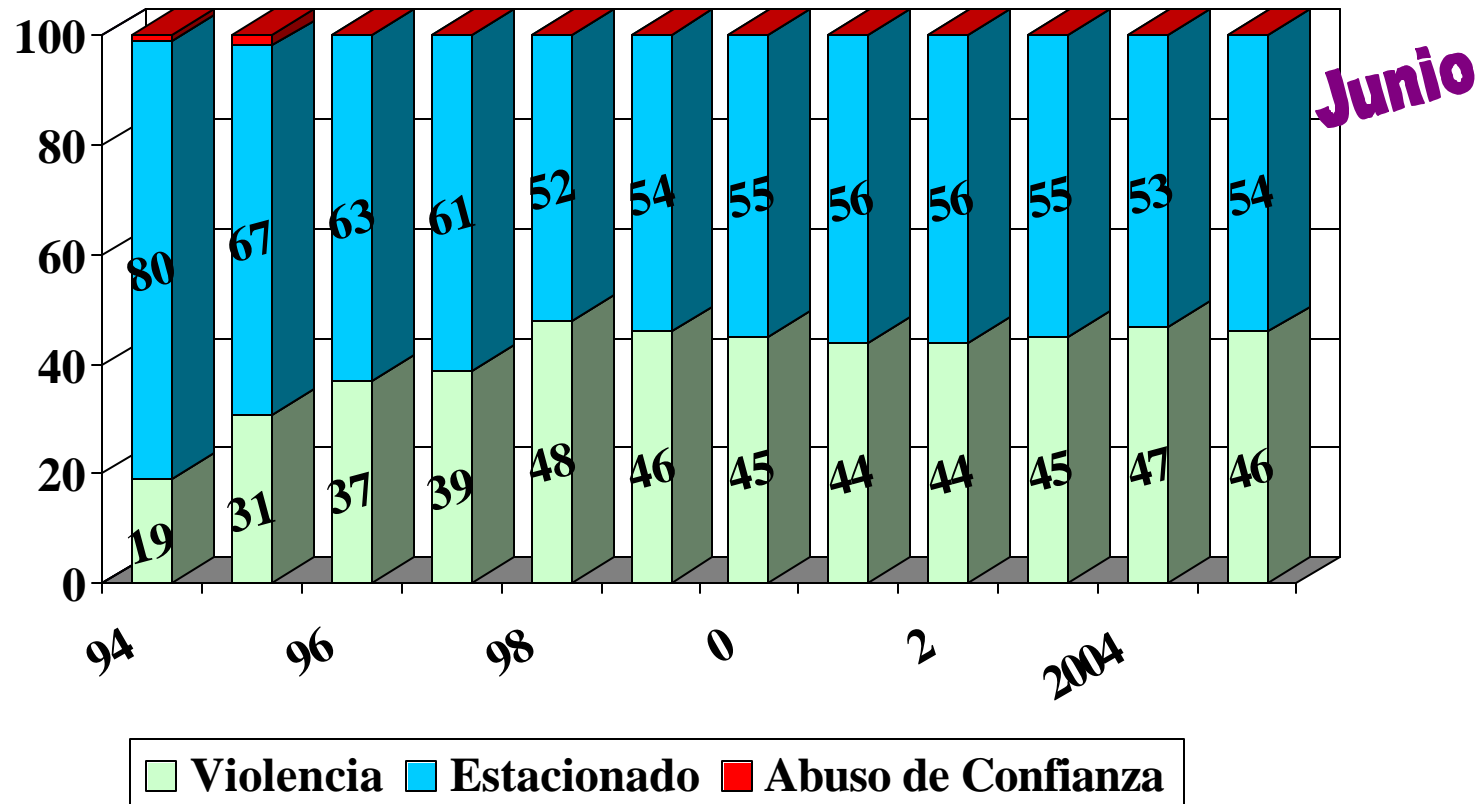
**DE**

**AUTOMOVILES**



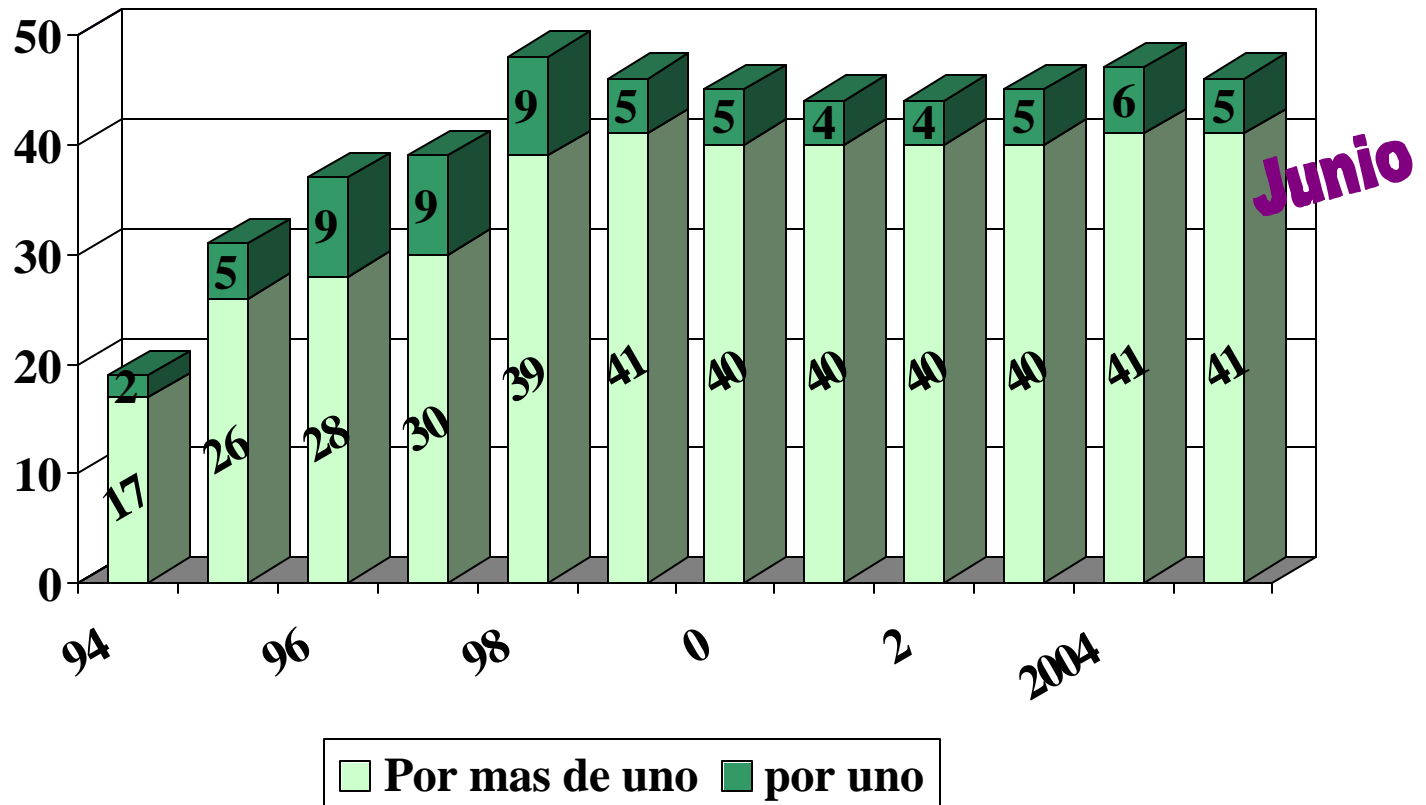
# El Robo Por Su Tipo

%



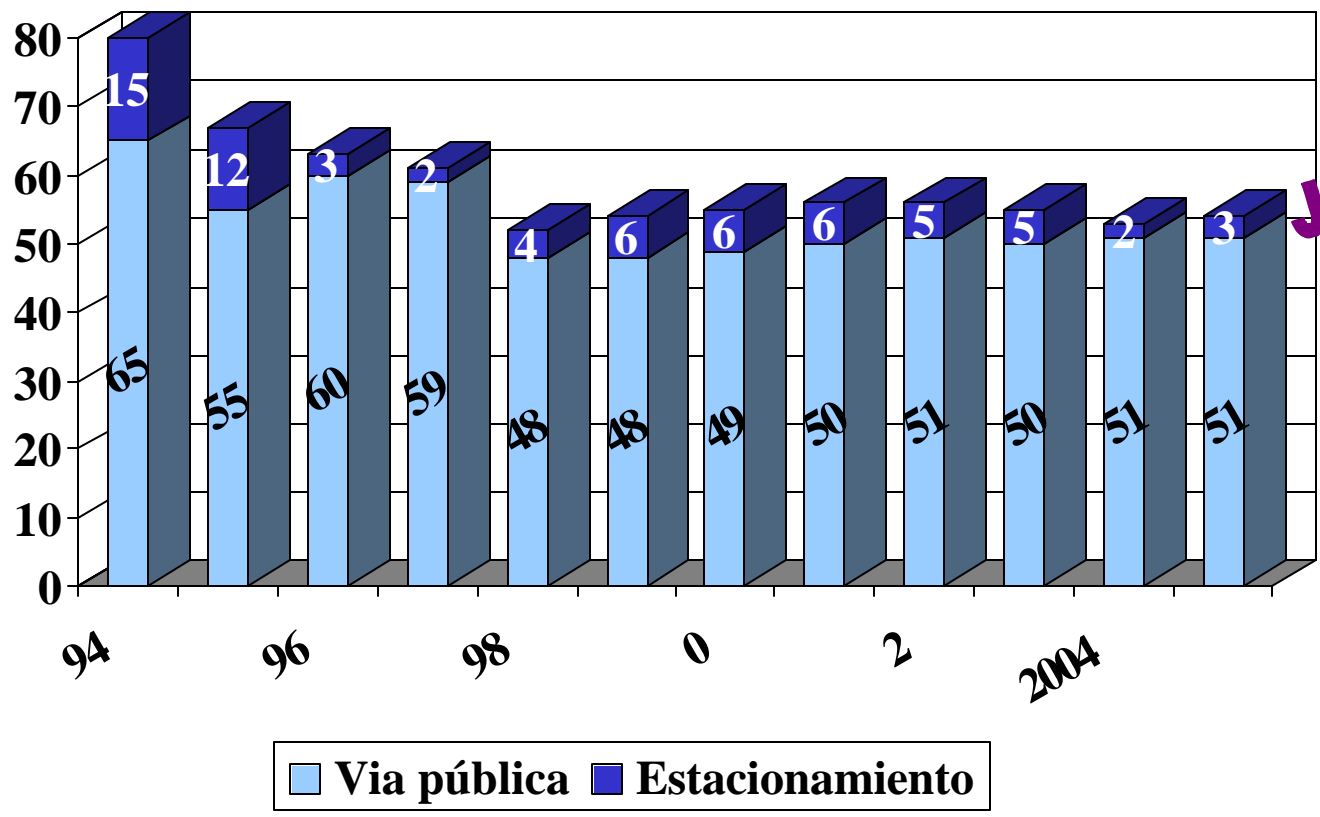
# El Robo Con Violencia

%



# El Robo En Vehículos Estacionados

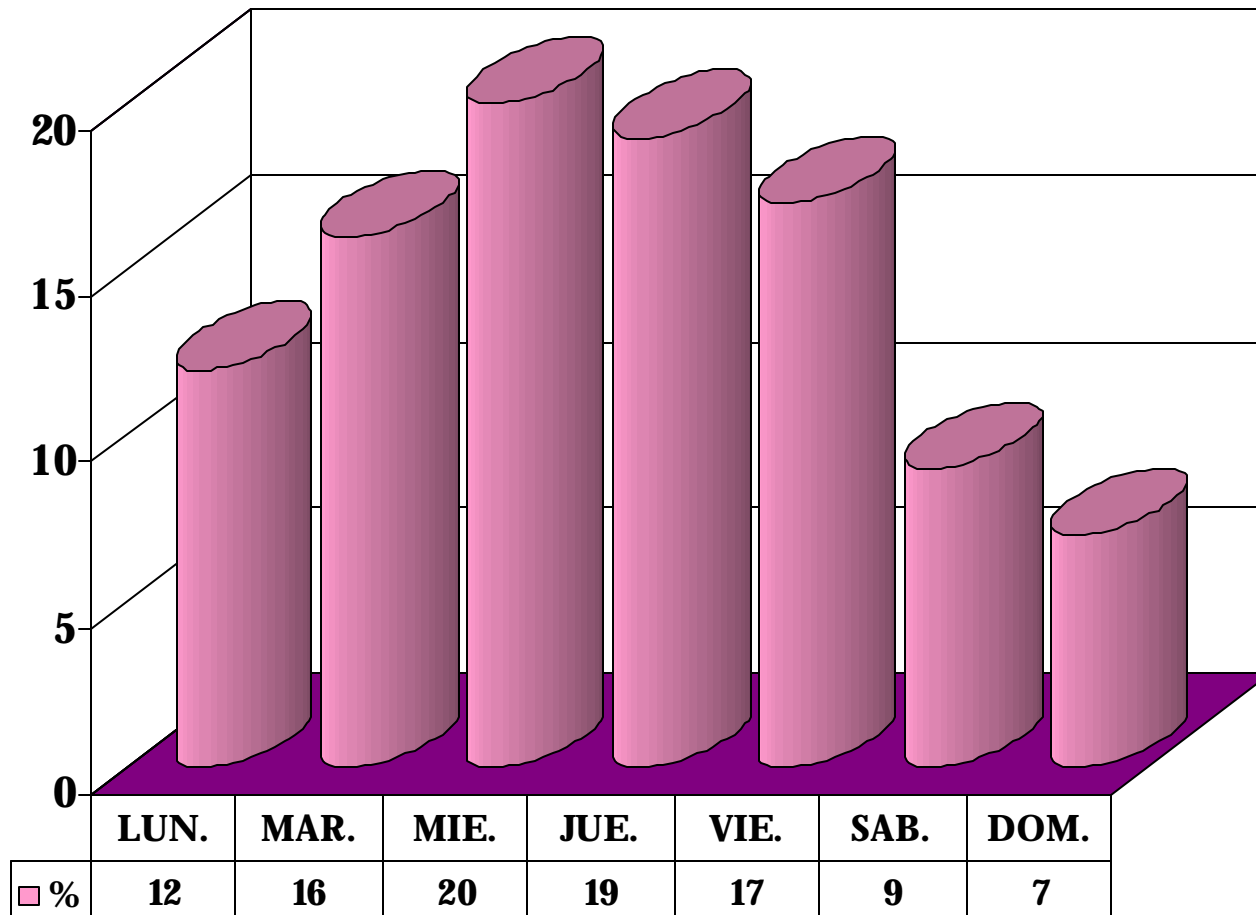
%



**Junio**

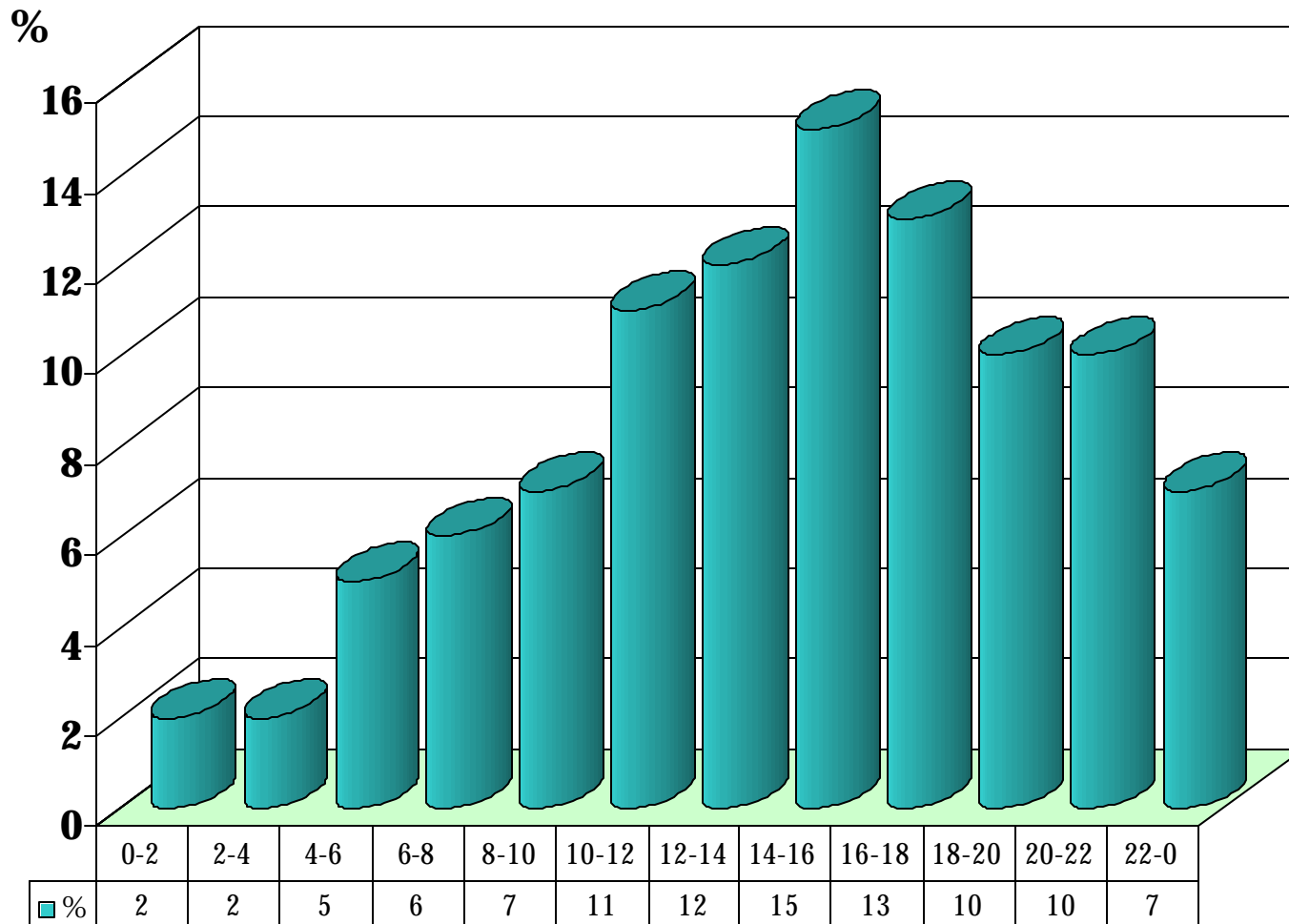
# EL ROBO

## POR DIA DE LA SEMANA



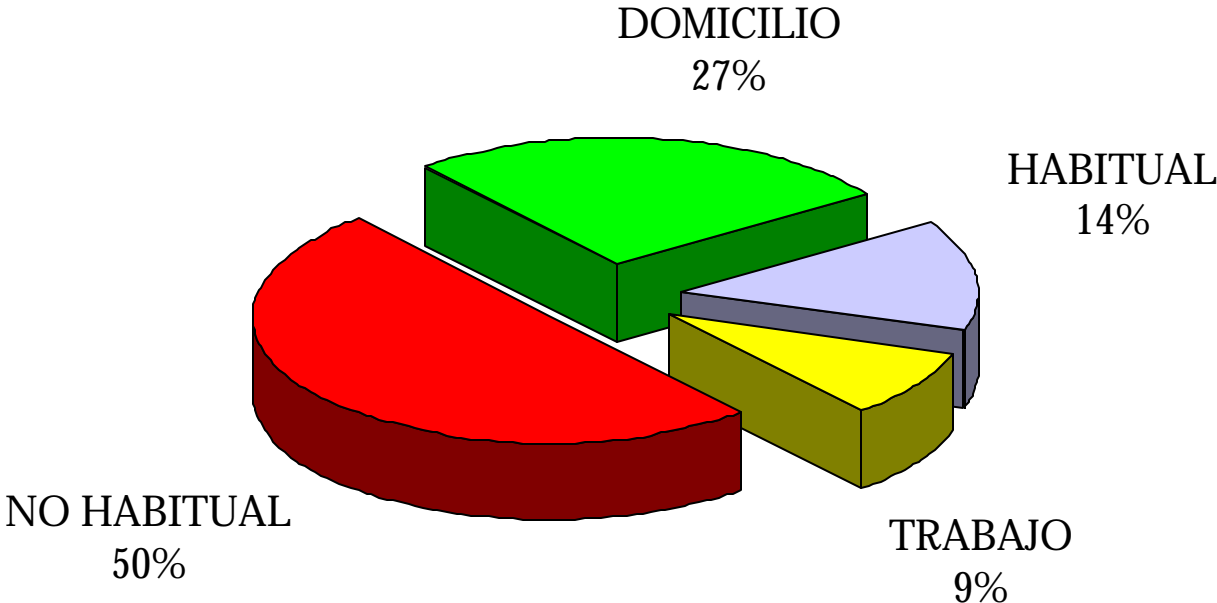
# EL ROBO

## POR HORA DE OCURRENCIA



# LUGAR DE ROBO

---

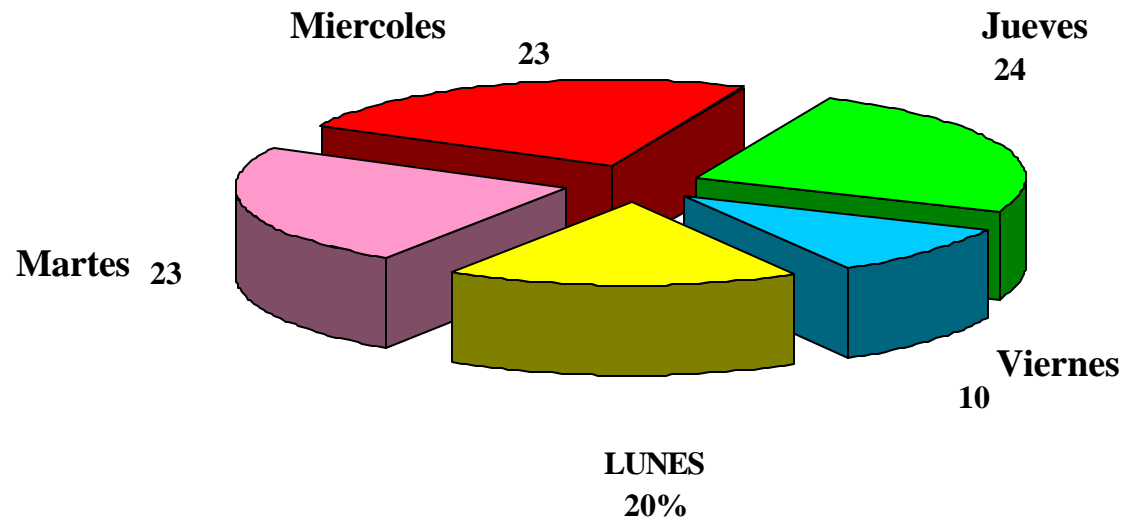


# “HOY NO CIRCULA”

## COMPOSICION

%

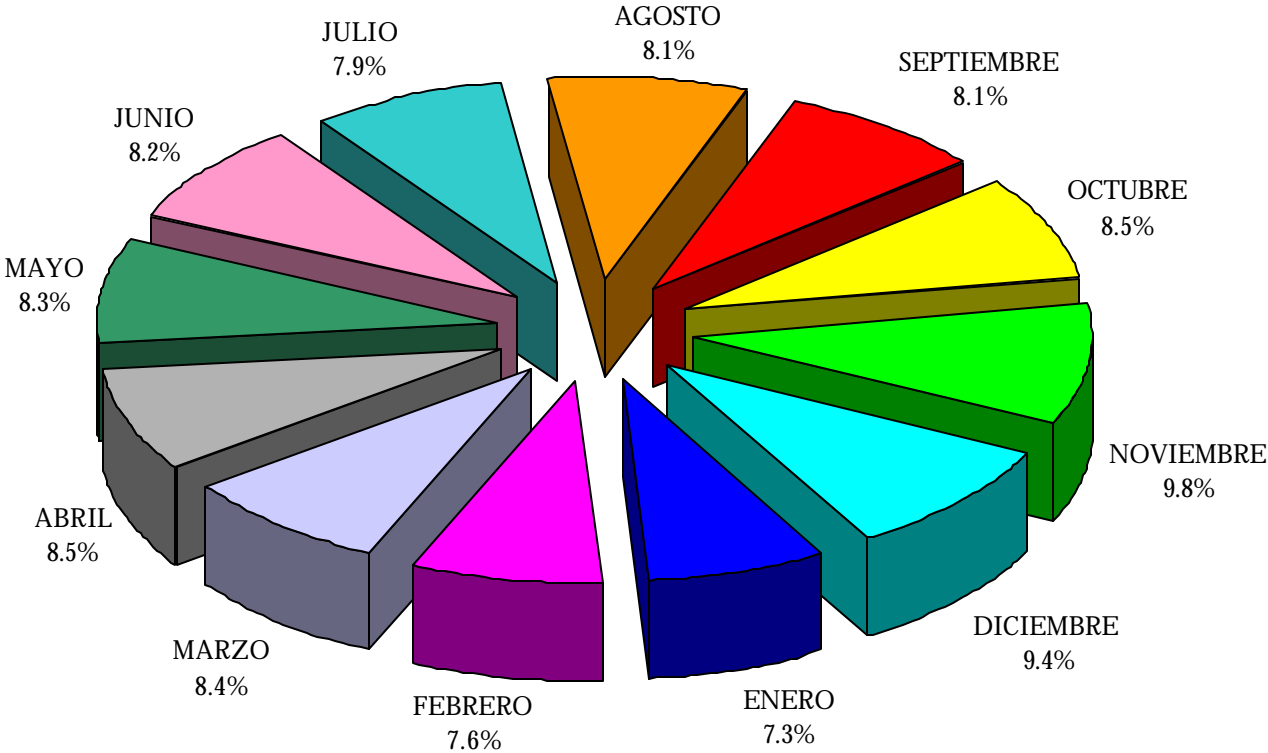
---





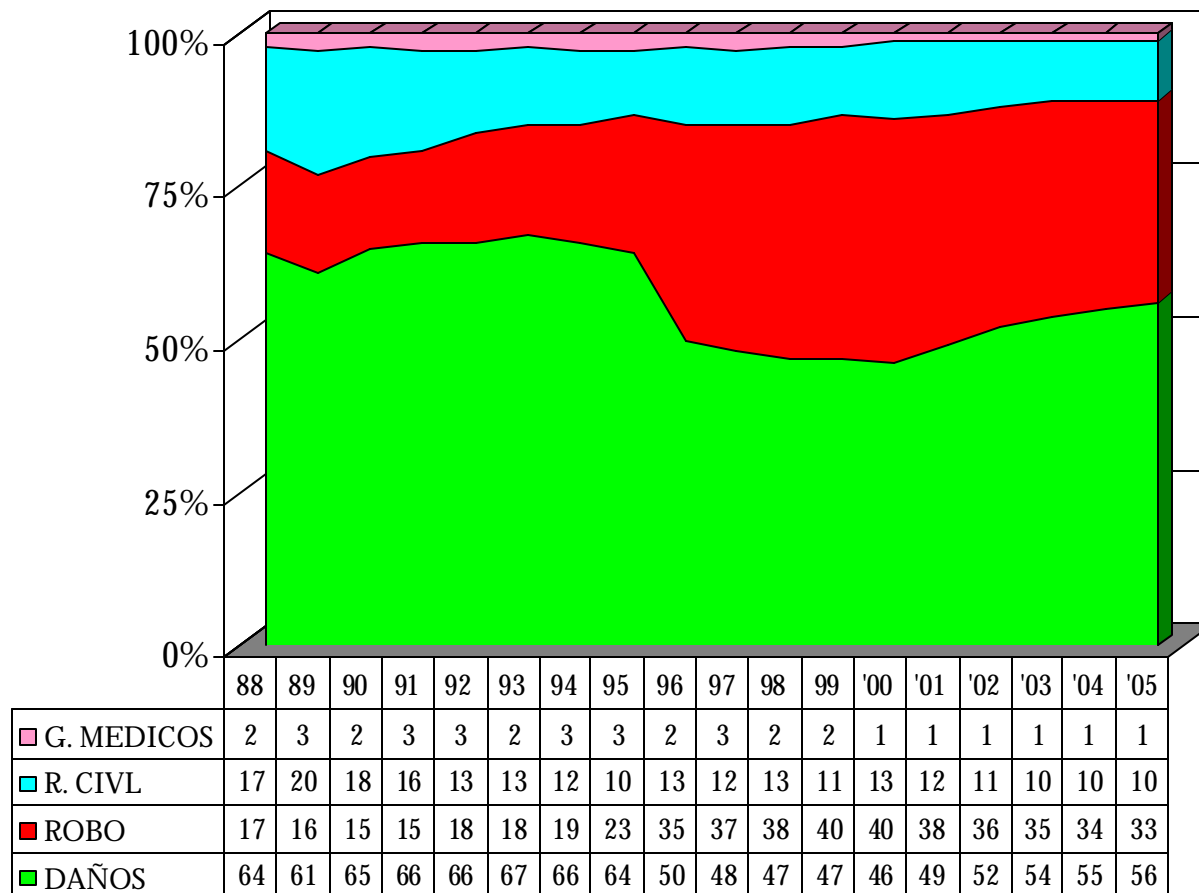
# EL ROBO DE ACUERDO AL MES

---



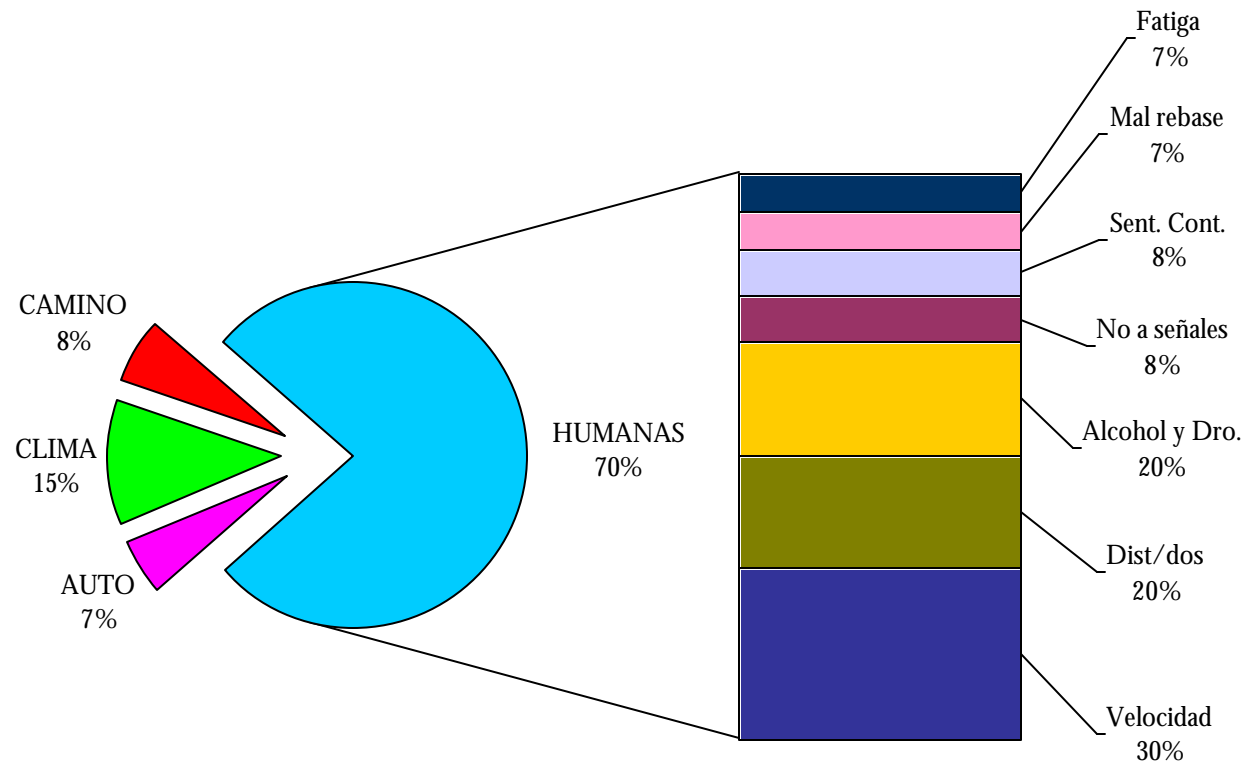
Ultimos 12 meses

# COMPOSICION DE COBERTURAS



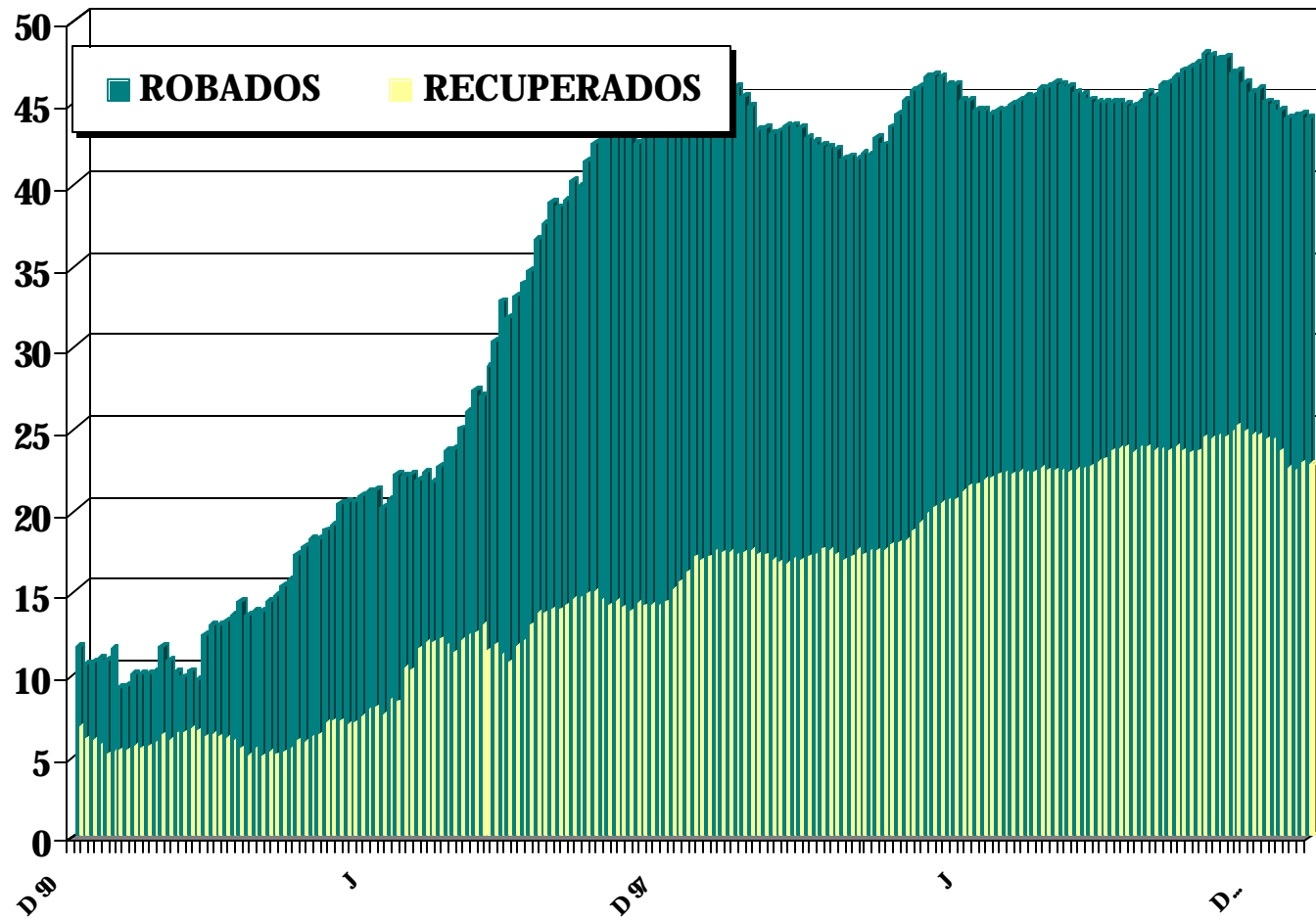
# CAUSAS DE LOS ACCIDENTES DE TRANSITO

---



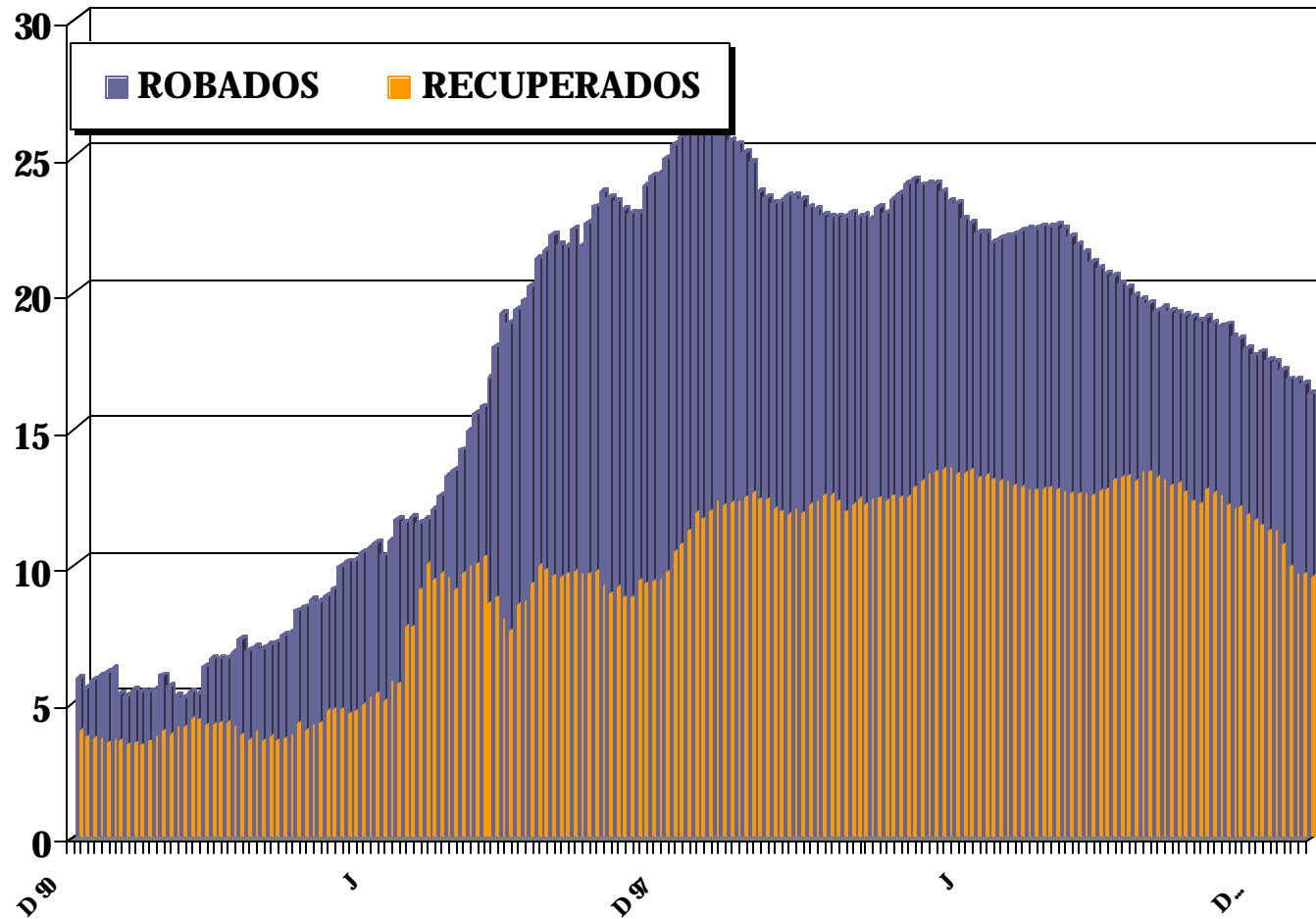
# NIVEL NACIONAL

Miles



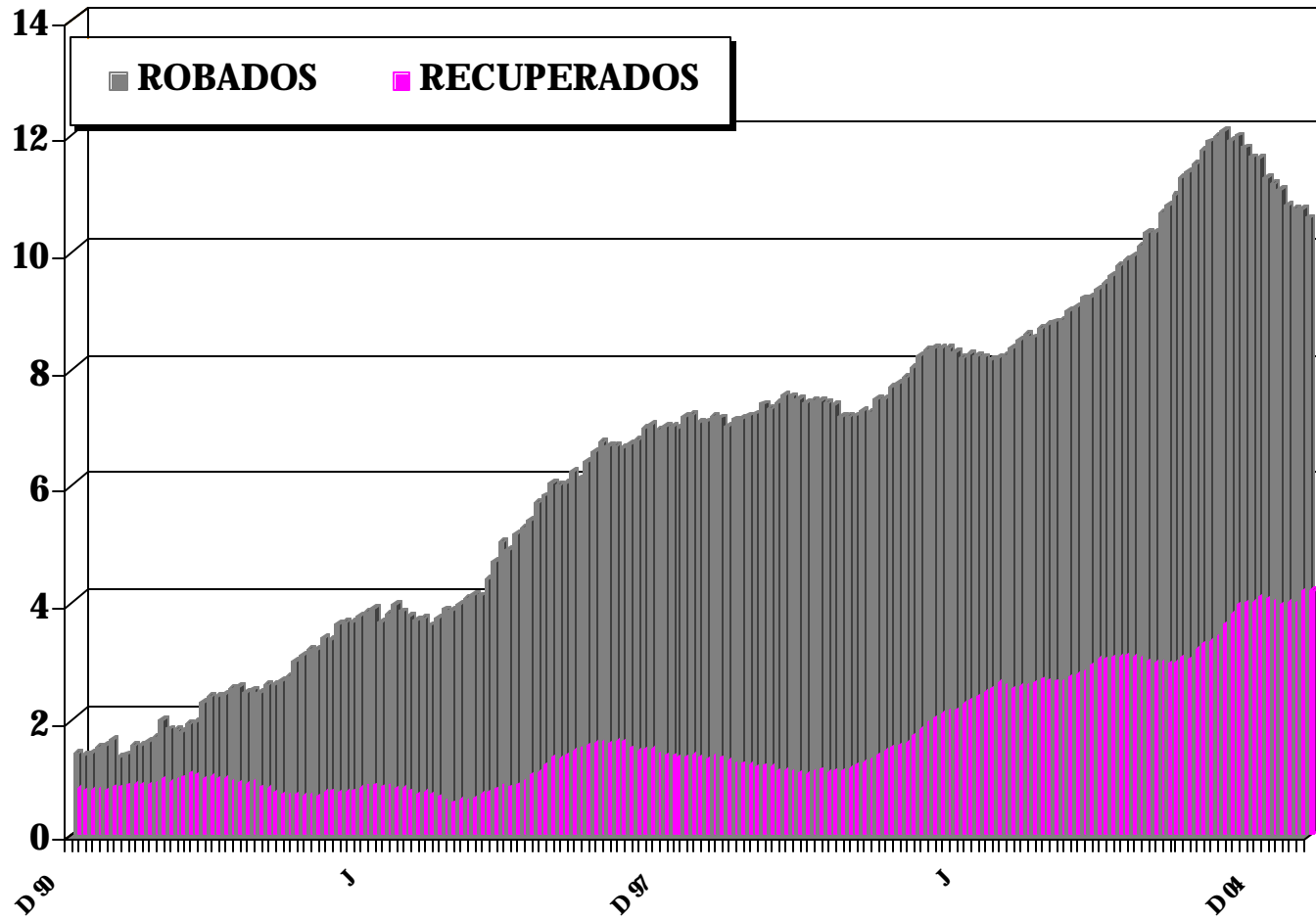
# DISTRITO FEDERAL

Miles

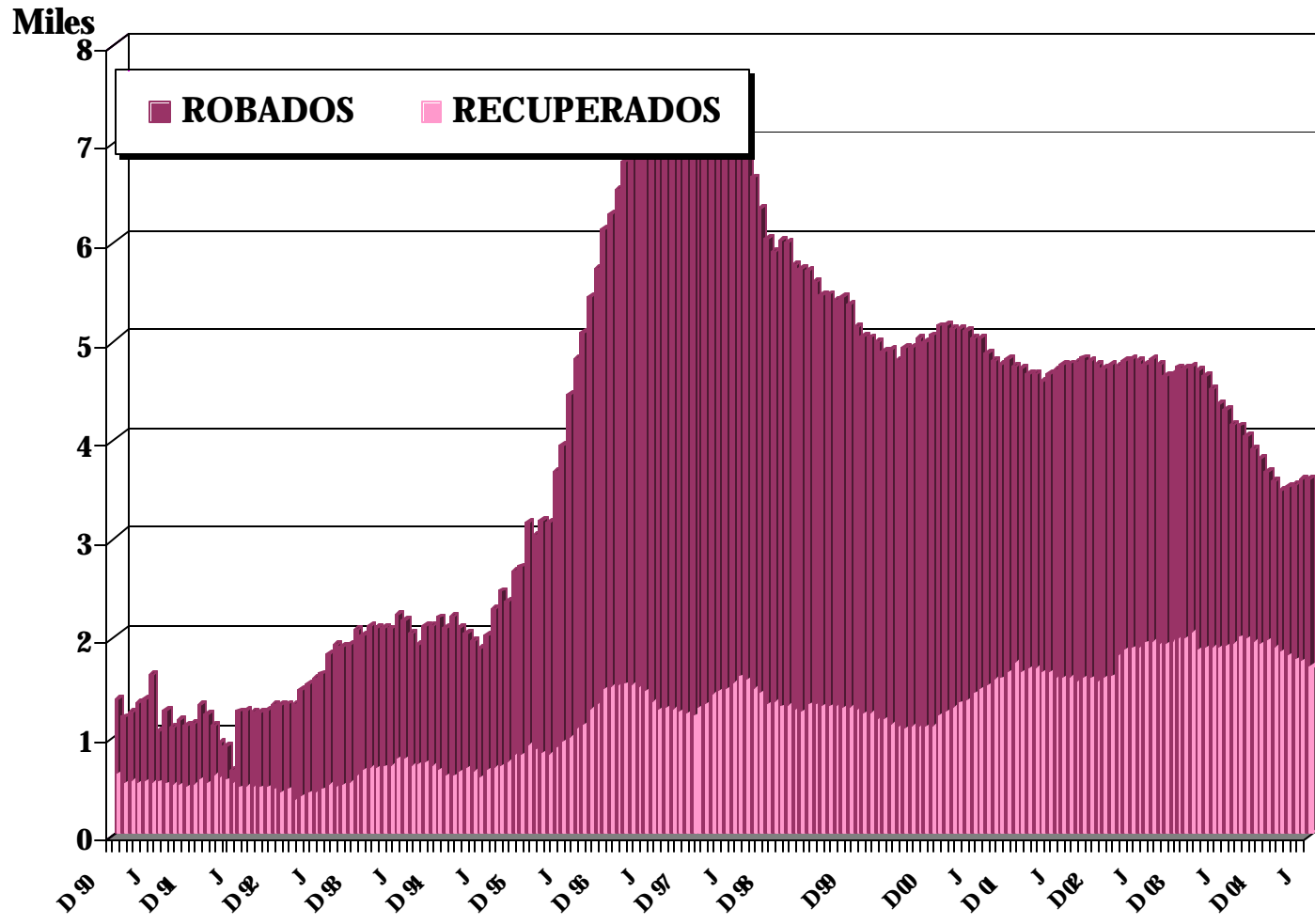


# ESTADO DE MEXICO

Miles

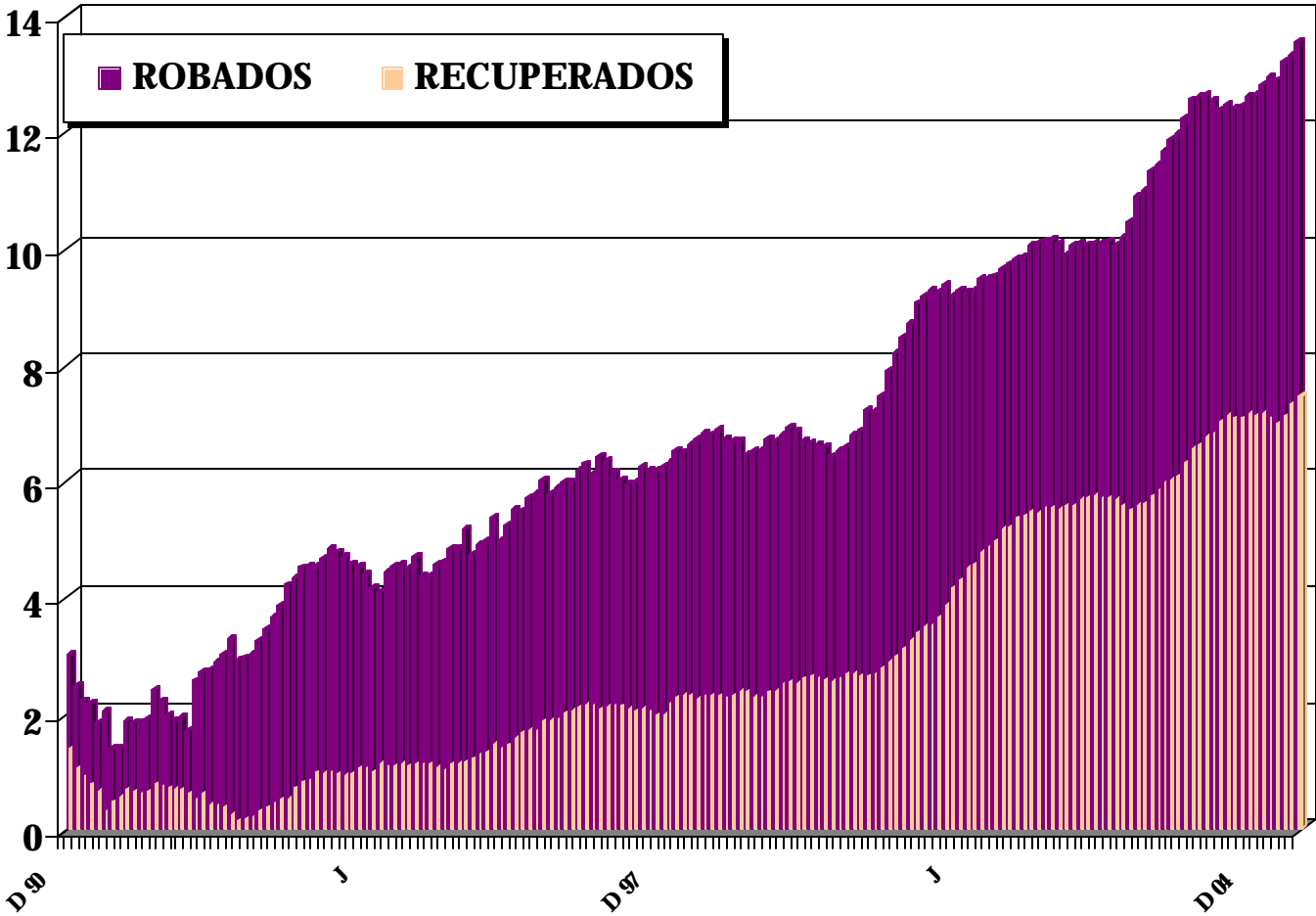


# JALISCO



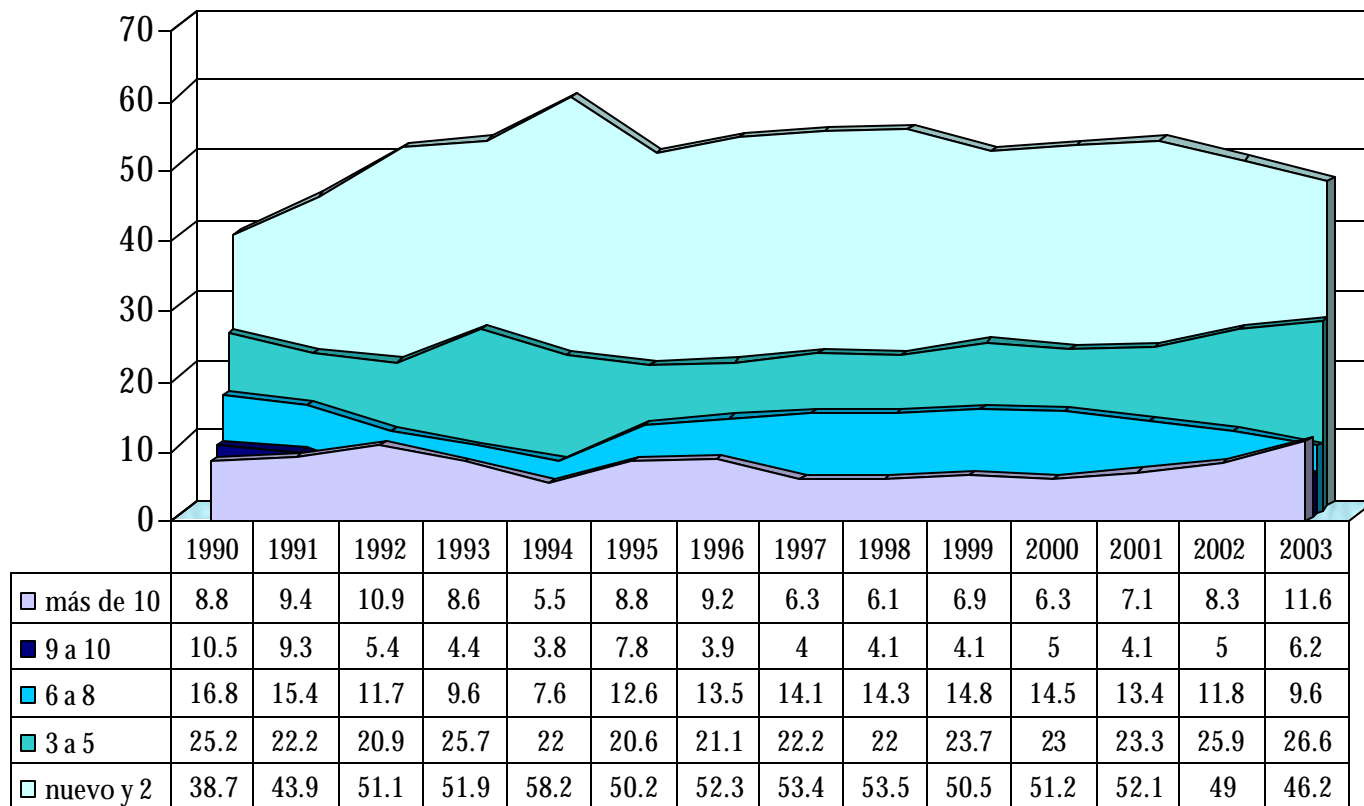
# RESTO DEL PAIS

Miles

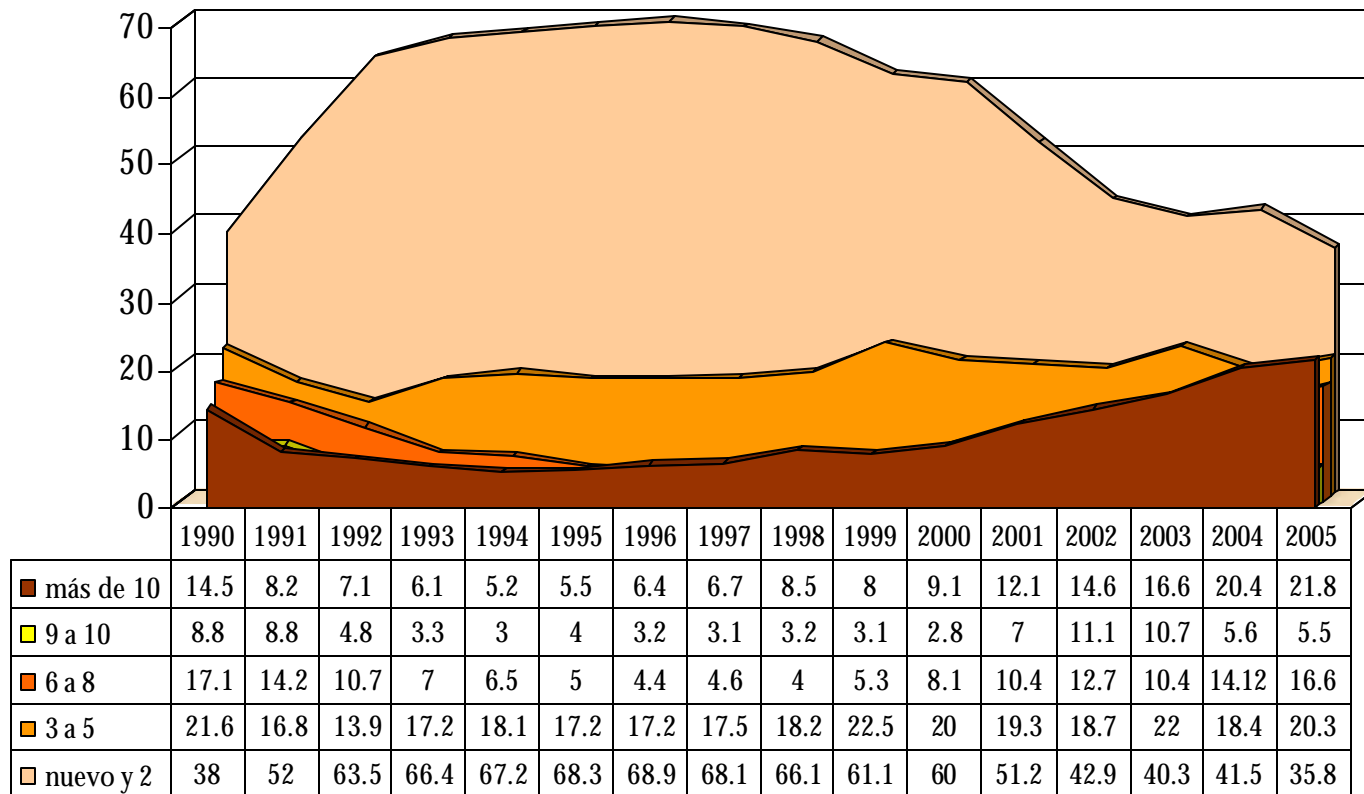




# EXPUESTOS POR MODELO



# ROBOS POR MODELO



# EL ROBO A NIVEL NACIONAL

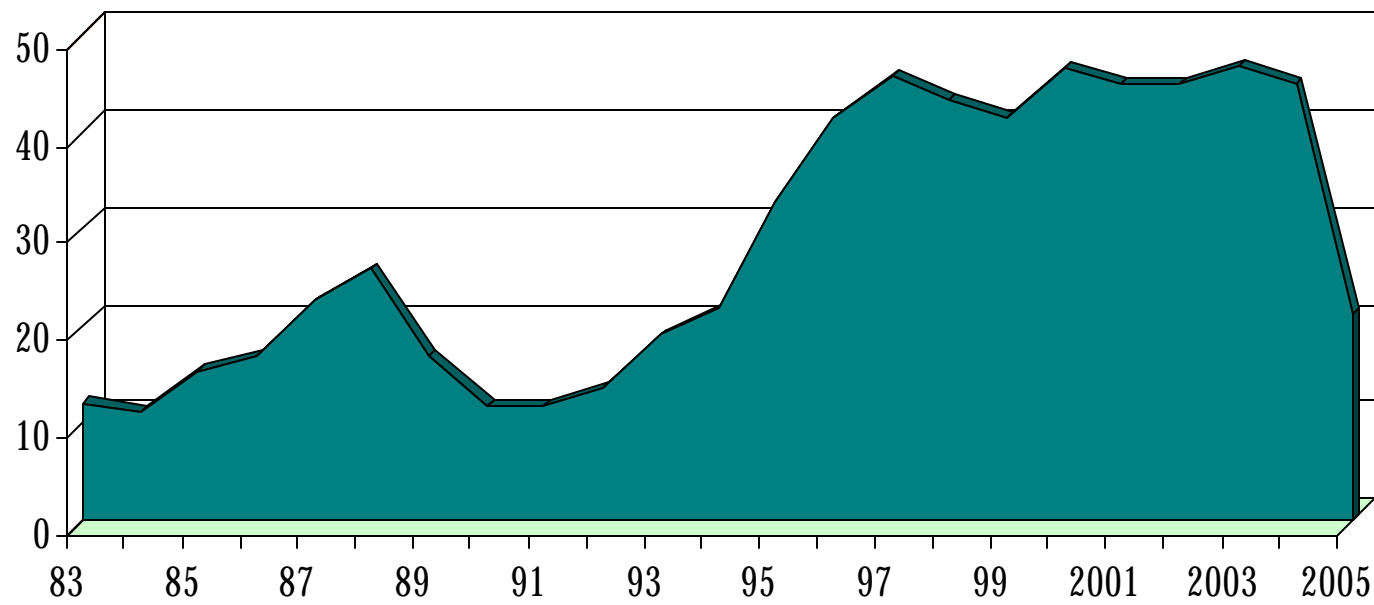
	ROBADOS	RECUPERADOS
85	15,321	7,828
86	16,941	7,448
87	22,369	11,028
88	25,883	13,313
89	16,909	11,177
90	11,583	6,651
91	11,578	6,138
92	13,471	4,897
93	19,026	6,956
94	21,770	11,388
95	32,686	11,102
96	41,314	14,707
97	45,725	14,959
98	43,210	17,214
99	41,424	16,781
00	46,433	19,760
1	44,778	22,140
2	44,939	22,901
3	46,873	23,615
4	44,959	24,326
5	21,209	10,847

**Junio**

# EL ROBO EN LOS ULTIMOS AÑOS A NIVEL NACIONAL

---

Miles



**Junio**

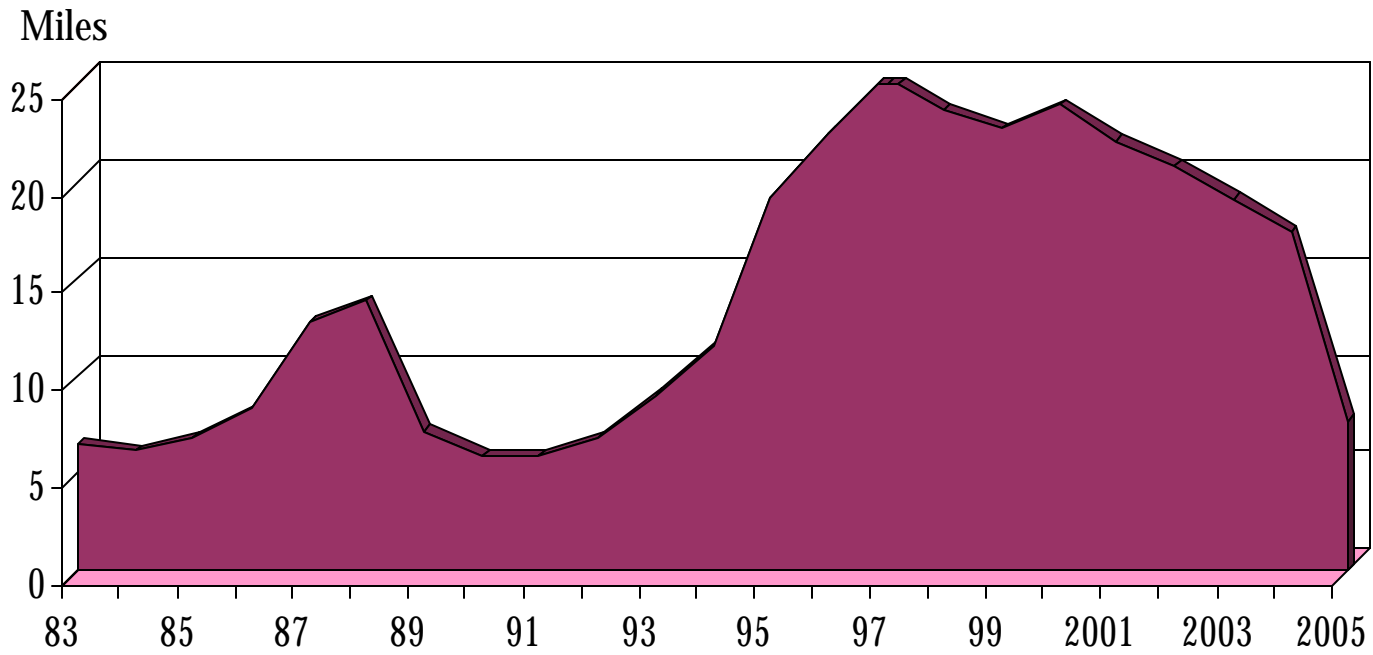
# EL ROBO EN EL DISTRITO FEDERAL

	ROBADOS	RECUPERADOS
85	6,795	3,474
86	8,263	3,478
87	12,762	6,130
88	13,874	7,459
89	7,114	5,405
90	5,806	3,860
91	5,881	3,866
92	6,802	3,495
93	9,026	4,624
94	11,523	8,988
95	19,174	7,926
96	22,500	9,556
97	25,383	10,432
98	23,663	12,325
99	22,714	11,890
00	23,938	13,245
1	22,096	12,844
2	20,838	12,639
3	19,092	12,608
4	17,435	11,208
5	7,666	4,467

**Junio**

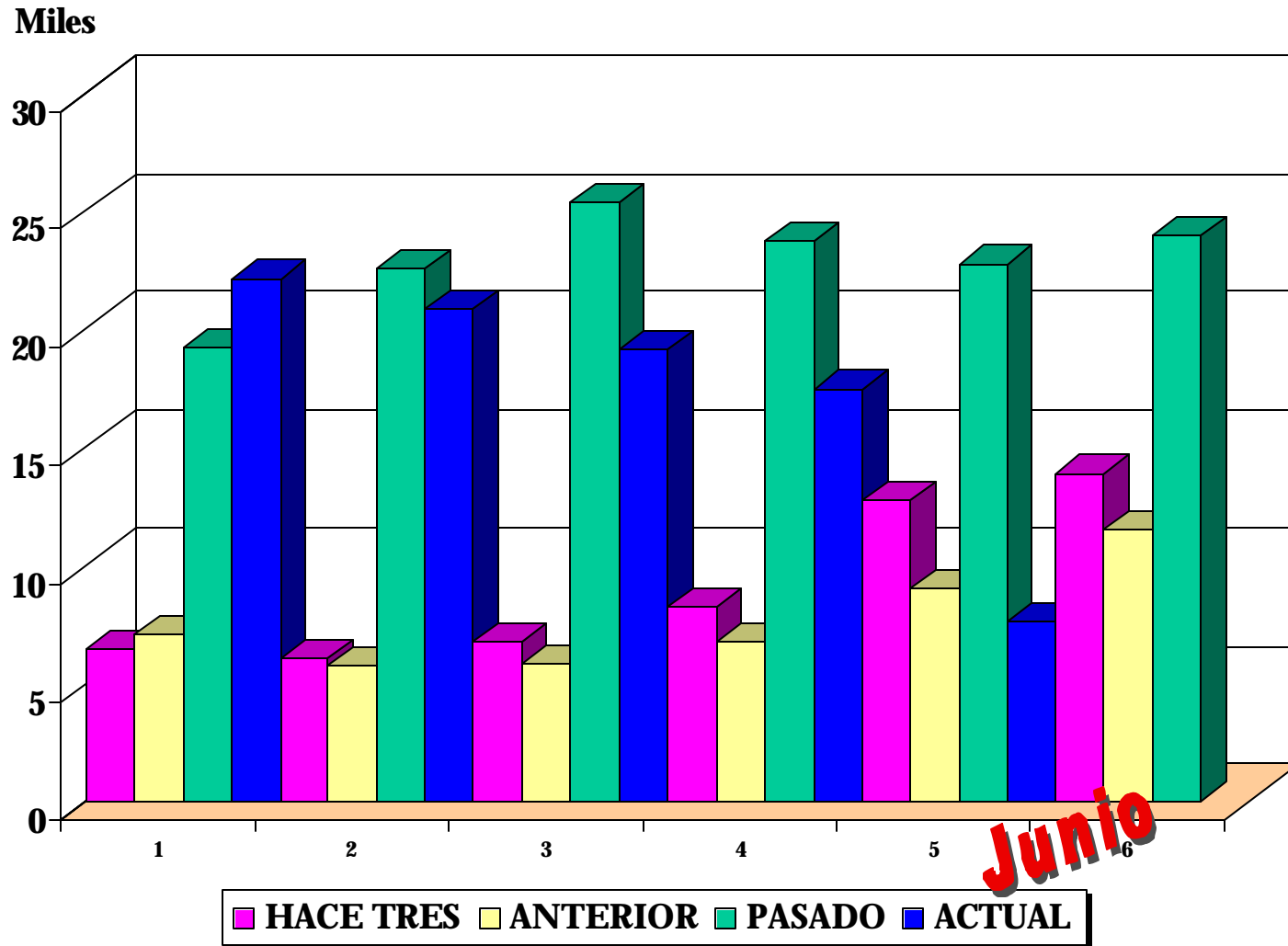
# EL ROBO EN LOS ULTIMOS AÑOS EN EL DISTRITO FEDERAL

---

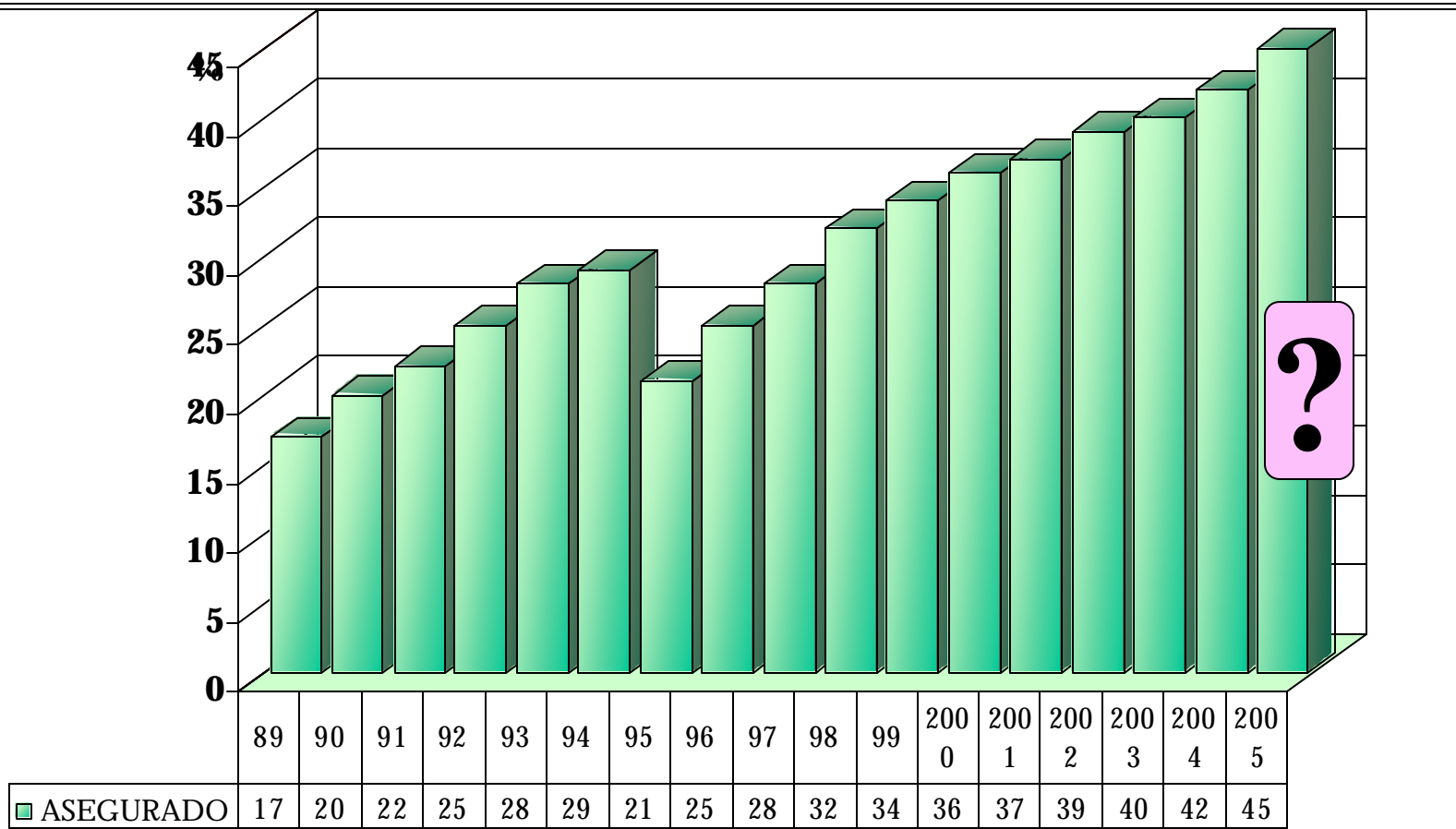


**Junio**

# EL ROBO Y SU TENDENCIA SEXENAL EN EL D.F.



# EL SEGURO DE AUTOMOVILES PENETRACION





# LOS 13 VEHICULOS MAS ROBADOS

**2005**

**48.6 %**

TSURU	3,483
VW. SEDAN	3,343
JETTA	961
C. NISSAN	918
CHEVY - MONZA	738
POINTER	561
SENTRA	437
C. GENERAL MOTORS	362
PLATINA	347
GOLF	329
C. FORD	295
X-TRAIL	286
HONDA 125 c.c.	257

# LA VIOLENCIA EN LOS 13 VEHICULOS MAS ROBADOS

## 2005

---

**39.0 %**

TSURU	29%
VW. SEDAN	23%
JETTA	61%
C. NISSAN	27%
CHEVY - MONZA	54%
POINTER	74%
SENTRA	29%
C. GENERAL MOTORS	31%
PLATINA	75%
GOLF	33%
C. FORD	45%
X- TRAIL	81%
HONDA 125 c. c.	39%

# LA FRECUENCIA EN LOS 13 VEHICULOS MAS ROBADOS

2004

*Preliminar*

0.87 %

TSURU	1.61%
VW. SEDAN	2.57%
JETTA	1.10%
C. NISSAN	1.75%
CHEVY - MONZA	0.52%
POINTER	0.53%
SENTRA	0.45%
C. GENERAL MOTORS	0.64%
PLATINA	0.32%
GOLF	1.49%
C. FORD	0.54%
X- TRAIL	1.70%
HONDA 125 c. c.	3.11%

**EL ROBO POR SU TIPO Y LA  
RECUPERACION**

**EN**

**EL ESTADO DE JALISCO**

# EL ROBO POR SU TIPO EN EL ESTADO DE JALISCO

%

**Junio**

